

MYTILINEOS Holdings S.A. CDP 2017 Water Score Feedback Chart

This feedback chart presents the score MYTILINEOS Holdings S.A. received for CDP's 2017 water questionnaire. The score is benchmarked against peer companies from its region and sector. A breakdown of the score into categories of different areas of water management is presented on the reverse. The chart is intended for use by both company representatives and investors who want to benchmark the company's water performance.

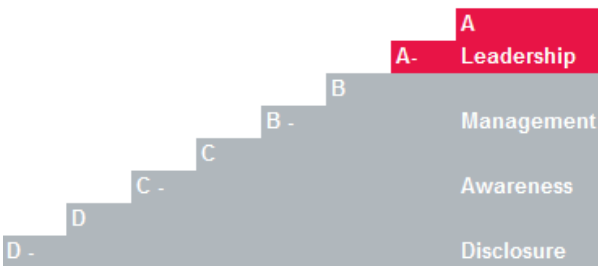
MYTILINEOS Holdings S.A. 2017 water score

A-

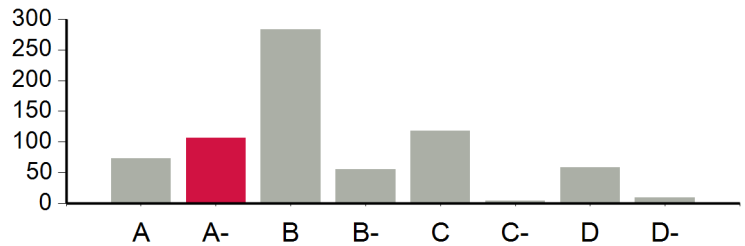
MYTILINEOS Holdings S.A. score level

Leadership

Score levels



CDP Water scores 2017



This bar chart shows the distribution of scores achieved in 2017. MYTILINEOS Holdings S.A.'s score is in red.

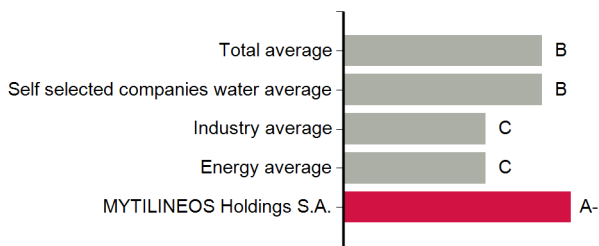
F: Failure to provide sufficient information to CDP to be evaluated for this purpose

Score summary statement

An excellent result. MYTILINEOS Holdings S.A. has implemented a range of best practice actions to manage water and mitigate water risk, both in its own operations and beyond them.

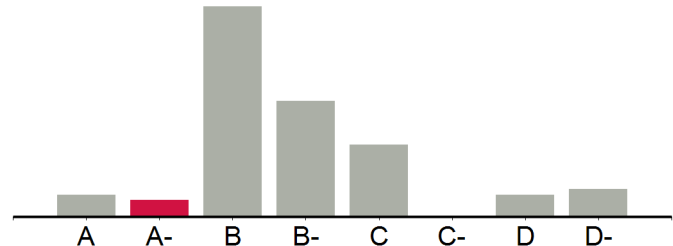
Benchmarking

Peer comparison



MYTILINEOS Holdings S.A. score relative to companies responding to CDP Water; companies in the regional sample; and industry and sector peers.

Sector benchmark



This bar chart shows the distribution of scores achieved in the Energy sector. MYTILINEOS Holdings S.A.'s score is in red.

MYTILINEOS Holdings S.A. reported the following information

Identified direct water risks

Water risks are assessed

Did not experience detrimental impacts related to water

Identified strategic, operational or market opportunities related to water

Company-wide targets and goals related to water are set

Has a water policy with clear goals and guidelines

Highest level of responsibility for water does not lie with the Board

Next steps

Scoring

Responses are scored by CDP's scoring partner organisations, using the [water scoring methodology](#)

[Request a score feedback call](#)

Learn more about responding

[Water questionnaire guidance](#)

[Other company responses](#)

[Improve performance with Reporter Services](#)

Supply chain

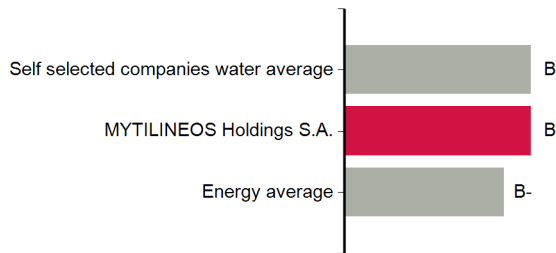
[Join the other companies](#) who are working to understand water risks in their supply chain

Water score breakdown: category scores

The five categories below refer to groups of questions with similar subject matter. Scores can be used to identify company strengths and areas for improvement. Find out which questions belong to which category [here](#)

Context

Measures understanding of dependency and impacts on water, and the ability to consolidate and report this information

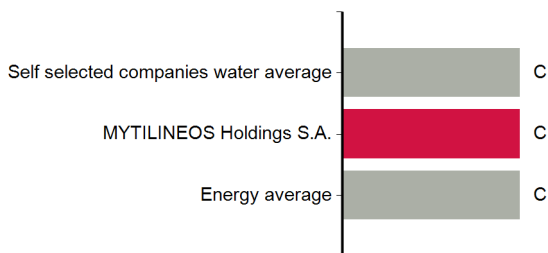


Best practice

Leading companies in this field have a good understanding of water use within their business and across the supply chain, and are aware of the positive and negative impacts that water can have on the business. The company defines and measures the effect of water-related risks, and tracks water-related compliance violations centrally. Water-related opportunities are identified and exploited and the company understands the linkages between water and other environmental issues.

Risk assessment

Measures ability to comprehensively assess water related risks

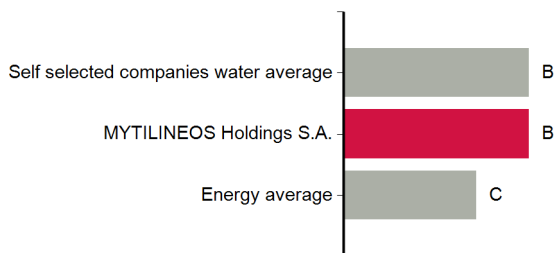


Best practice

Best practice in this category is for risk assessments to take place at a suitable geographic scale, on a regular basis, looking into the medium/long-term. Leading companies will include a broad range of relevant contextual issues and relevant stakeholders in the risk assessment. Best practice is for the results of the risk assessment to inform and drive the growth strategy of the business.

Governance and strategy

Measures extent to which the company has policies and structures in place to manage water strategically

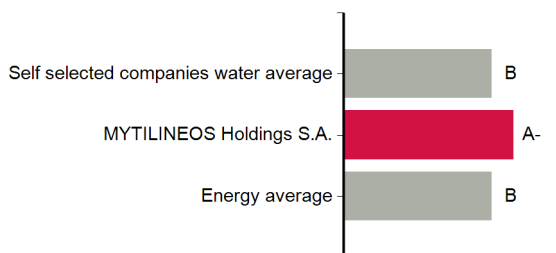


Best practice

Higher scores suggest that water management is integrated into business strategy, with notable results. Responsibility for water issues resides at a senior level within the organization. A publicly-available water policy exists which demonstrates elements of best practice. Leaders will have measurable targets and goals, specific to the company's business strategy, in place and progress has been made towards them.

Direct risks and response

Measures ability to account for water data and water risks from direct operations

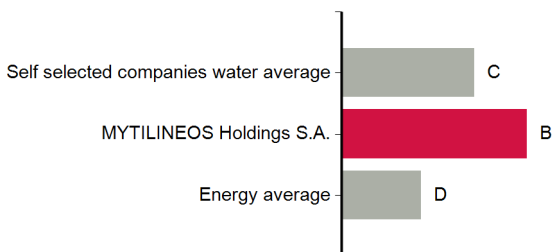


Best practice

High scoring companies centrally track and regularly monitor total water withdrawals by source, consumption and discharges by destination. Water risks are identified and tracked at the river basin level, and facilities at risk within these river basins identified. Leading companies report detailed water accounting information for those at-risk facilities and develop response strategies to tackle water-related risks.

Indirect risks and response

Measures the ability to gather information on water and water risks from the supply chain



Best practice

This category recognizes company efforts to consider their impact beyond direct operations. Leading companies either request their suppliers to report on their water use or risks and management, or provide a strong rationale for not requesting this information. The company measures the potential impact of water risk along the supply chain, and puts in place strategies to respond.